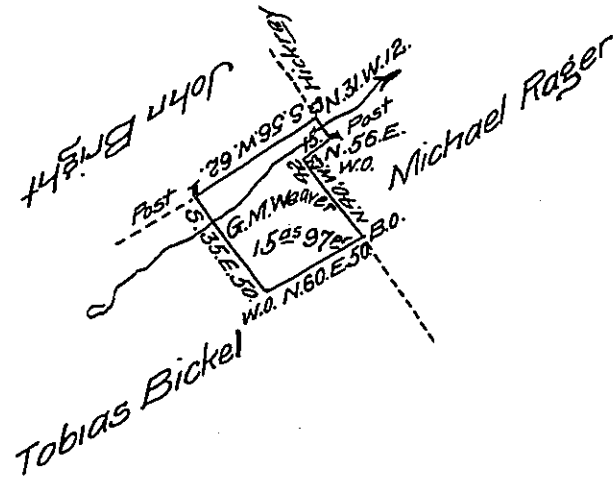


the Courses of this Draught is
S. 56. W. 62. Post S. 35. E. 50. White dk.
N. 60. E. 50. B. dk. N. 40. W. 42. W. O.
N. 56. E. 15. Post. N. 31. W. 12 Hicky. Beg.



A Draught of a Tract of land Situate in Penns Township
Northumberland County Surveyed the 3rd Day of January 1793
for George Michael Weaver in Pursuance of his Warrant bearing
date the 19th June 1787 Containing Fifteen Acres & Ninety Seven
perches & allowance of 6 $\frac{1}{2}$ C. & c.

p^e Frd^le Evans D.S.

To Daniel Brodhead Esquire }
Surveyor General of Pennsylvania }

IN TESTIMONY that the above is a copy of the original remaining on file in
the Department of Internal Affairs of Pennsylvania, made
conformably to an Act of Assembly approved the 16th day of
February, 1833, I have hereunto set my Hand and caused
the Seal of said Department to be affixed at Harrisburg,
this twenty sixth day of June 1907.

Henry Houch
Secretary of Internal Affairs.